

Westcon Construction Corporation



Westcon Main Office Conference Room

“Built With Pride Since 1995”

Westcon Construction Corp. is a general & engineering construction firm that specializes in unique and challenging projects. During the past twenty-three (23) years we have established a reputation for consistently delivering diverse, high quality work that is on time and within budget. Please reference the attached data sheets and client list for additional information.

One of our highest priorities during each project is to establish and maintain long term client relationships. We do this by creating a foundation of trust and integrity, combined with a total team effort every step of the way. If given the opportunity, our skilled

Construction Solutions for:

- ⇒ General Engineering
- ⇒ Railroad
- ⇒ Infrastructure
- ⇒ Bridges
- ⇒ Structural Concrete
- ⇒ Seismic Bracing
- ⇒ Specialty Construction

References Certifications Awards

- ⇒ References
- ⇒ Certifications
- ⇒ Awards

- ◇ Established 1995
- ◇ License #703557, A-Engineering, B-General
- ◇ Construction, C-8—Concrete
- ◇ Bonding capacity: \$10M Single, \$20M Agg.
- ◇ Excess Liability Insurance: \$5M
- ◇ Builders Risk, Inland Marine & Pollution Insurance
- ◇ Long term employment of key staff
- ◇ Self-perform (historically) 75% of all contracted work.

HEADQUARTERS
275 Taylor Road
Newcastle, CA 95658-9601
CA License No. 703557
CONTACT
Phone (916) 663-2425
Fax (916) 663-2448
www.westconconstruction.com

Westcon Construction Corp.



***“Built With
Pride
Since 1995”***

General Engineering PROJECTS REVIEW

Construction Solutions for:

- ⇒ **General Engineering**
- ⇒ **Railroad**
- ⇒ **Infrastructure**
- ⇒ **Bridges**
- ⇒ **Structural Concrete**
- ⇒ **Seismic Bracing**
- ⇒ **Specialty Construction**

References Certifications Awards

- ⇒ **References**
- ⇒ **Certifications**
- ⇒ **Awards**

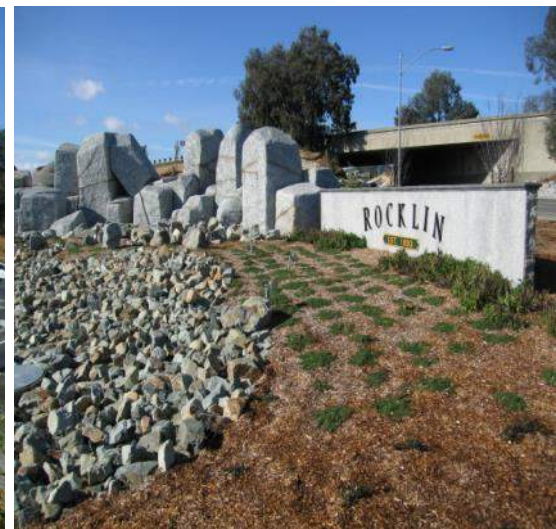
Folsom Prison Firing Range-CA D.G.S

Mass excavation, grading, structural concrete, shotcrete, ballistic tiles,



Rocklin Rd. & I-80 Off-Ramp Improvements-City of Rocklin

Freeway on-ramp and off-ramp rock walls, irrigation and landscaping, shotcrete monuments, granite structures, granite signage.



HEADQUARTERS
275 Taylor Road
Newcastle, CA 95658-9601
CA License No. 703557
 CONTACT
Phone (916) 663-2425
Fax (916) 663-2448
www.westconconstruction.com

Westcon Construction Corp.



***“Built With
Pride
Since 1995”***

General Engineering PROJECTS REVIEW

Construction Solutions for:

- ⇒ **General Engineering**
- ⇒ **Railroad**
- ⇒ **Infrastructure**
- ⇒ **Bridges**
- ⇒ **Structural Concrete**
- ⇒ **Seismic Bracing**
- ⇒ **Specialty Construction**

References Certifications Awards

- ⇒ **References**
- ⇒ **Certifications**
- ⇒ **Awards**

Lake Natoma Waterfront Access-City of Folsom

Construction of ADA compliant access trails, bridges and ramps with naturally stamped and colored concrete pathways. Work was challenging due to limited heavy equipment access for most stages of work including rough & finish grading, aggregate base, concrete paving & brick paving. Scope also included pile and plate shoring adjacent to active roadways.



Latrobe Road Bike Trail and Bridges-Lennar Homes

Earthwork , rock excavation, subgrade and construction of 4,500/LF of trail paving and 9,000/lf of stabilized decomposed granite shoulder work. Scope included construction of two (2) pedestrian bridges and irrigation & landscaping of phases I & II



HEADQUARTERS
275 Taylor Road
Newcastle, CA 95658-9601
CA License No. 703557
 CONTACT
Phone (916) 663-2425
Fax (916) 663-2448
www.westconconstruction.com

Westcon Construction Corp.



Railroad PROJECTS REVIEW

***"Built With
Pride
Since 1995"***

Feather River Canyon PTC Utility Poles - U.P.R.R.

Installation of fifty (50) weathered steel Positive Train Control (PTC) utility poles within the Feather River Canyon. Scope included remote access via hi-rail vehicles high-strength rock bolting, pole installation & anchoring.



Construction Solutions for:

- ⇒ General Engineering
- ⇒ **Railroad**
- ⇒ Infrastructure
- ⇒ Bridges
- ⇒ Structural Concrete
- ⇒ Seismic Bracing
- ⇒ Specialty Construction

References Certifications Awards

- ⇒ References
- ⇒ Certifications
- ⇒ Awards

HEADQUARTERS
275 Taylor Road
Newcastle, CA 95658-9601
CA License No. 703557
 CONTACT
Phone (916) 663-2425
Fax (916) 663-2448
www.westconconstruction.com

Westcon Construction Corp.



Railroad **PROJECTS REVIEW**

***“Built With
Pride
Since 1995”***

Donner Summit Emergency Generators - U.P.R.R.

Construction of four (4) emergency generator / fueling sites on Donner Summit. Scope included hi-rail only heavy equipment access, CIP structures, rock trenching, conduit bridge tussles, and a wide variety of other work on the original and still active transcontinental railroad main line.



Westcon Construction Corp.

Construction Solutions for:

- ⇒ General Engineering
- ⇒ **Railroad**
- ⇒ Infrastructure
- ⇒ Bridges
- ⇒ Structural Concrete
- ⇒ Seismic Bracing
- ⇒ Specialty Construction

References Certifications Awards

- ⇒ References
- ⇒ Certifications
- ⇒ Awards

HEADQUARTERS
275 Taylor Road
Newcastle, CA 95658-9601
CA License No. 703557
 CONTACT
Phone (916) 663-2425
Fax (916) 663-2448
www.westconconstruction.com

A large white crane truck is lifting a large, rectangular industrial component, possibly a heat exchanger or reactor, from a storage area. The component is suspended by a cable and is being moved towards a large, cylindrical industrial tank. The scene is set in an industrial facility with various pipes, valves, and structures visible in the background. The sky is clear and blue.

Locomotive Sand Gantry Demolition - U.P.R.R.

Construction Solutions for:

- [illegible]

HEADQUARTERS
275 Taylor Road
Newcastle, CA 95658-9601
CA License No. 703557

CONTACT
Phone (916) 663-2425
Fax (916) 663-2448
www.westconconstruction.com



Westcon Construction Corp.



Railroad PROJECTS REVIEW

***"Built With
Pride
Since 1995"***

Feather River Canyon Retaining Walls - U.P.R.R.

Construction of steel pile and lagging retaining walls with 12" diameter pile sockets drilled through solid bedrock. Numerous logistical challenges had to be overcome due to hi-rail only access to 3 separate locations spread 25 miles apart within the feather river canyon rail system. Work windows were periodically only 2 hour long during a 10 hour shift which made every allowable working minute extremely important & valuable.



UPRR Feather River Canyon - Retaining Walls



UPRR Feather River Canyon - Retaining Walls

Construction Solutions for:

- ⇒ General Engineering
- ⇒ **Railroad**
- ⇒ Infrastructure
- ⇒ Bridges
- ⇒ Structural Concrete
- ⇒ Seismic Bracing
- ⇒ Specialty Construction

References Certifications Awards

- ⇒ References
- ⇒ Certifications
- ⇒ Awards

HEADQUARTERS
275 Taylor Road
Newcastle, CA 95658-9601
CA License No. 703557
CONTACT
Phone (916) 663-2425
Fax (916) 663-2448
www.westconconstruction.com

Westcon Construction Corp.

Railroad **PROJECTS REVIEW**

***"Built With
Pride
Since 1995"***

UPRR West Side Loco Shop

Facilities Maintenance - U.P.R.R.

24/7 on-call repairs to buildings, structures, rails, underground utilities, overhead systems



Service Track Pans For Locomotive Wash-U.P.R.R.

1,500 CY of CIP structural concrete railroad track pans, industrial waste recycle tanks and oil-water separators, metal buildings, foundation work, concrete aprons



Westcon Construction Corp.

Construction Solutions for:

- ⇒ General Engineering
- ⇒ **Railroad**
- ⇒ Infrastructure
- ⇒ Bridges
- ⇒ Structural Concrete
- ⇒ Seismic Bracing
- ⇒ Specialty Construction

References Certifications Awards

- ⇒ References
- ⇒ Certifications
- ⇒ Awards

HEADQUARTERS
275 Taylor Road
Newcastle, CA 95658-9601
CA License No. 703557
CONTACT
Phone (916) 663-2425
Fax (916) 663-2448
www.westconconstruction.com

Railroad **PROJECTS REVIEW**



***“Built With
Pride
Since 1995”***

Construction Solutions for:

- ⇒ General Engineering
- ⇒ **Railroad**
- ⇒ Infrastructure
- ⇒ Bridges
- ⇒ Structural Concrete
- ⇒ Seismic Bracing
- ⇒ Specialty Construction

References Certifications Awards

- ⇒ References
- ⇒ Certifications
- ⇒ Awards

West Side Locomotive Shop Track Pans - U.P.R.R.

Track demolition, over-excavation, industrial waste system, Continuous Welded Rail (CWR), Overhead Locomotive Utility Services, Track Slabs, D-Rail, LED Lighting



HEADQUARTERS
275 Taylor Road
Newcastle, CA 95658-9601
CA License No. 703557
CONTACT
Phone (916) 663-2425
Fax (916) 663-2448
www.westconconstruction.com

Westcon Construction Corp.

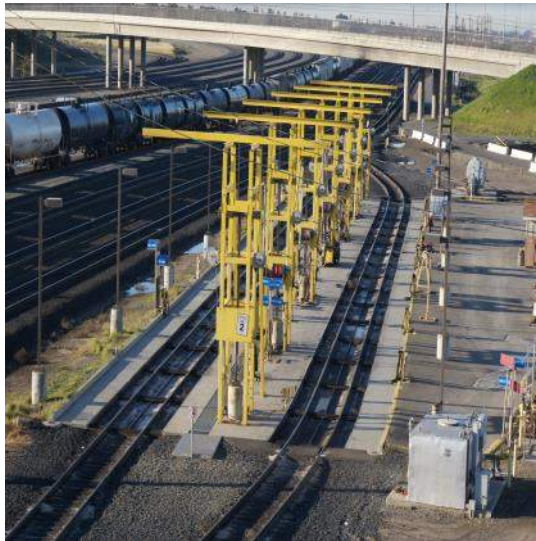
Railroad **PROJECTS REVIEW**

***"Built With
Pride
Since 1995"***

**Donner Summit Power, Generators
& Emergency Fueling Facilities**

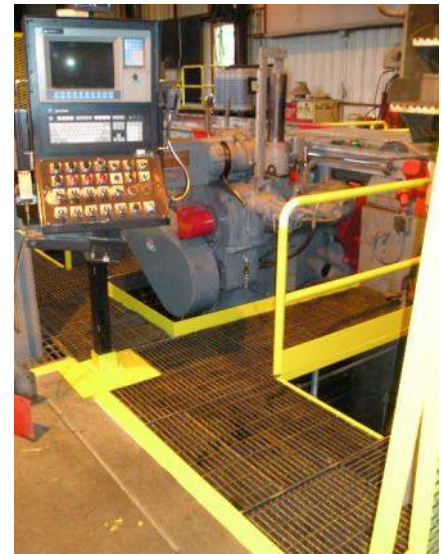
Locomotive Fueling Station - U.P.R.R.

Track demolition, over-excavation, industrial waste containment system, 6-inch diesel fuel supply, 2-inch journal oil, 3-inch vacuum system



Wheel Truing Facility-U.P.R.R.

Design/build industrial structures, mechanical repairs.



Westcon Construction Corp.

Construction Solutions for:

- ⇒ General Engineering
- ⇒ **Railroad**
- ⇒ Infrastructure
- ⇒ Bridges
- ⇒ Structural Concrete
- ⇒ Seismic Bracing
- ⇒ Specialty Construction

References Certifications Awards

- ⇒ References
- ⇒ Certifications
- ⇒ Awards

HEADQUARTERS
**275 Taylor Road
Newcastle, CA 95658-9601
CA License No. 703557**
CONTACT
**Phone (916) 663-2425
Fax (916) 663-2448
www.westconconstruction.com**



Roseville Locomotive Shop

Railroad PROJECTS REVIEW

***"Built With
Pride
Since 1995"***

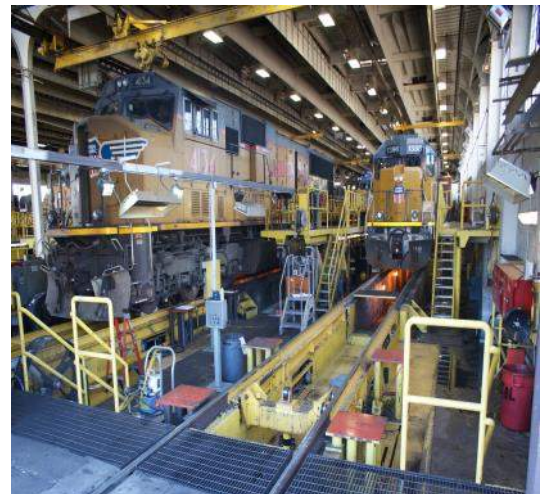
Supply Warehouse Addition – U.P.R.R.

Over-excavation, major foundation demo, concrete ramps, dock levelers, metal building, finishes.



50-Ton Drop Tables - U.P.R.R.

R & R 100-ton drop table assembly, replace with 2 each 50-ton drop tables. Scope included heavy demolition, structural concrete / steel, epoxy anchored rail system, metal grating & stairs, epoxy paint, traction motor dollies, hydraulic piping, electrical



Westcon Construction Corp.

Construction Solutions for:

- ⇒ General Engineering
- ⇒ **Railroad**
- ⇒ Infrastructure
- ⇒ Bridges
- ⇒ Structural Concrete
- ⇒ Seismic Bracing
- ⇒ Specialty Construction

References Certifications Awards

- ⇒ References
- ⇒ Certifications
- ⇒ Awards

HEADQUARTERS
275 Taylor Road
Newcastle, CA 95658-9601
CA License No. 703557
 CONTACT
Phone (916) 663-2425
Fax (916) 663-2448
www.westconconstruction.com



Infrastructure PROJECTS REVIEW

***“Built With
Pride
Since 1995”***

Construction Solutions for:

- ⇒ General Engineering
- ⇒ Railroad
- ⇒ **Infrastructure**
- ⇒ Bridges
- ⇒ Structural Concrete
- ⇒ Seismic Bracing
- ⇒ Specialty Construction

References Certifications Awards

- ⇒ References
- ⇒ Certifications
- ⇒ Awards

Newcastle Wastewater Treatment Plant Decommissioning

14,000 lineal feet of sewer forced main, mass excavation and grading (75,000 CY), new wet wells, pumps and appurtenances, pond lining, emergency generator, new pump station, jack and bore tunnel work.



HEADQUARTERS
275 Taylor Road
Newcastle, CA 95658-9601
CA License No. 703557
 CONTACT
Phone (916) 663-2425
Fax (916) 663-2448
www.westconconstruction.com

Westcon Construction Corp.

Infrastructure PROJECTS REVIEW

*"Built With
Pride
Since 1995"*



Oroville Dam Stop Log Fabrication - Dept. Of Water Res.

Fabrication and installation of stainless steel guide rails and stop logs for Lake Oroville Dam and Thermal to After bay. Work included underwater epoxy anchors for 14 each spillway gates and confined space crane work.



Folsom Dam Battery Room – Fed. Bureau Of Reclamation

Folsom Dam fire control battery room addition.



Westcon Construction Corp.

Construction Solutions for:

- ⇒ General Engineering
- ⇒ Railroad
- ⇒ Infrastructure
- ⇒ Bridges
- ⇒ Structural Concrete
- ⇒ Seismic Bracing
- ⇒ Specialty Construction

References Certifications Awards

- ⇒ References
- ⇒ Certifications
- ⇒ Awards

HEADQUARTERS
275 Taylor Road
Newcastle, CA 95658-9601
CA License No. 703557
CONTACT
Phone (916) 663-2425
Fax (916) 663-2448
www.westconconstruction.com



***“Built With
Pride
Since 1995”***

Infrastructure PROJECTS REVIEW

Construction Solutions for:

- ⇒ General Engineering
- ⇒ Railroad
- ⇒ **Infrastructure**
- ⇒ Bridges
- ⇒ Structural Concrete
- ⇒ Seismic Bracing
- ⇒ Specialty Construction

References Certifications Awards

- ⇒ References
- ⇒ Certifications
- ⇒ Awards

Mooretown Sewer Lift Station-L.O.P.U.D.

Bypass pumping, sewer wet well improvements, new pumps, controls, lift station surrounds, electrical, precast emergency overflow tanks.



Greenback & Auburn Blvd Intersection-City of Citrus Heights

Intersection improvements included storm drain, traffic signals, accessibility ramps, brick pattern crosswalk, asphalt overlay, striping, etc.

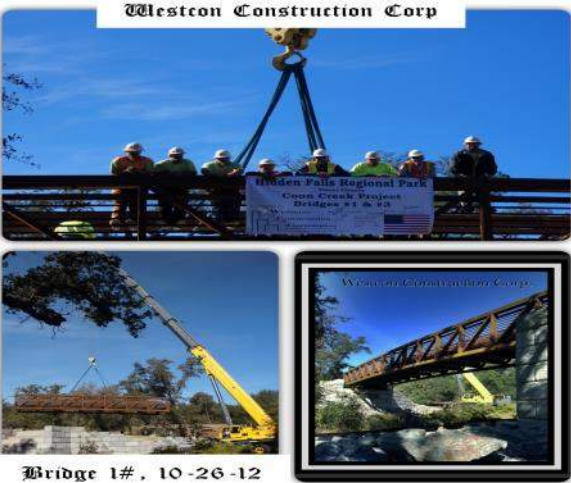


HEADQUARTERS
275 Taylor Road
Newcastle, CA 95658-9601
CA License No. 703557
 CONTACT
Phone (916) 663-2425
Fax (916) 663-2448
www.westconconstruction.com

Westcon Construction Corp.

Infrastructure PROJECTS REVIEW

***"Built With
Pride
Since 1995"***



Richardson Street Realignment - City of Grass Valley

Richardson Street realignment work included demolition, grading, paving, relocation of a 14" high pressure water main and new manholes, new sidewalks and access ramps, stone veneer, traffic lights.



Construction Solutions for:

- ⇒ General Engineering
- ⇒ Railroad
- ⇒ Infrastructure
- ⇒ Bridges
- ⇒ Structural Concrete
- ⇒ Seismic Bracing
- ⇒ Specialty Construction

References Certifications Awards

- ⇒ References
- ⇒ Certifications
- ⇒ Awards

HEADQUARTERS
275 Taylor Road
Newcastle, CA 95658-9601
CA License No. 703557
CONTACT
Phone (916) 663-2425
Fax (916) 663-2448
www.westconconstruction.com



***"Built With
Pride
Since 1995"***

Infrastructure PROJECTS REVIEW

Sheridan Water System - County of Placer

Drill and develop 24" domestic water well, construction of a steel water storage tank, pump station, emergency generator / automatic transfer switch, and approximately 1 mile of pipeline for connection to an existing distribution system along Camp Far West road.



Construction Solutions for:

- ⇒ General Engineering
- ⇒ Railroad
- ⇒ **Infrastructure**
- ⇒ Bridges
- ⇒ Structural Concrete
- ⇒ Seismic Bracing
- ⇒ Specialty Construction

References Certifications Awards

- ⇒ References
- ⇒ Certifications
- ⇒ Awards

HEADQUARTERS
275 Taylor Road
Newcastle, CA 95658-9601
CA License No. 703557
 CONTACT
Phone (916) 663-2425
Fax (916) 663-2448
www.westconconstruction.com

Westcon Construction Corp.



***"Built With
Pride
Since 1995"***

Bridges **PROJECTS REVIEW**

Folsom Johnny Cash Bridge and Bike Trail - City of Folsom

Grade 1.5 miles of paved bike trail, MSE Wall and Ultra-block, two 40 ft. Tall Concrete abutment towers, architectural concrete, metal work and construction a 150 ft. span pre-engineered truss bridge.



Westcon Construction Corp.

Construction Solutions for:

- ⇒ General Engineering
- ⇒ Railroad
- ⇒ Infrastructure
- ⇒ **Bridges**
- ⇒ Structural Concrete
- ⇒ Seismic Bracing
- ⇒ Specialty Construction

References Certifications Awards

- ⇒ References
- ⇒ Certifications
- ⇒ Awards

HEADQUARTERS
275 Taylor Road
Newcastle, CA 95658-9601
CA License No. 703557
 CONTACT
Phone (916) 663-2425
Fax (916) 663-2448
www.westconconstruction.com



Johnny Cash Bridge and Bike Trail - City of Folsom



Construction Solutions for:

- ⇒ General Engineering
- ⇒ Railroad
- ⇒ Infrastructure
- ⇒ **Bridges**
- ⇒ Structural Concrete
- ⇒ Seismic Bracing
- ⇒ Specialty Construction

References Certifications Awards

- ⇒ References
- ⇒ Certifications
- ⇒ Awards

HEADQUARTERS
275 Taylor Road
Newcastle, CA 95658-9601
CA License No. 703557
 CONTACT
Phone (916) 663-2425
Fax (916) 663-2448
www.westconconstruction.com

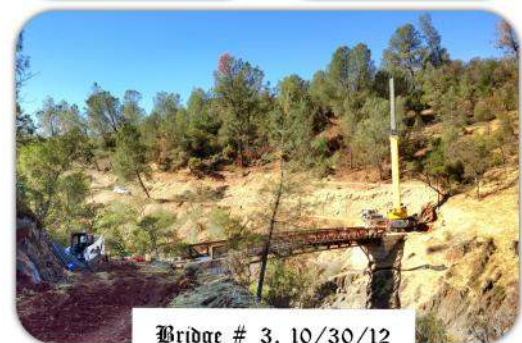
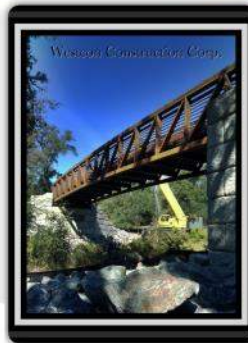
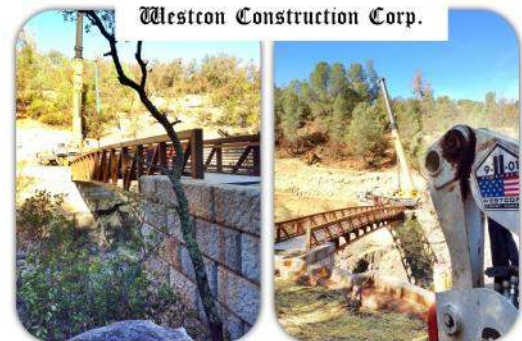


***"Built With
Pride
Since 1995"***

Bridges **PROJECTS REVIEW**

Hidden Falls Regional Park - Coon Creek Bridges

Construction of two (2) weathered steel bridges in remote locations within Placer County's Hidden Falls Regional Park. Bridge materials include precast concrete abutment walls, cast-in-place concrete foundations and pre-engineered free span steel truss bridges.



Bridge 1#, 10-26-12

Bridge # 3, 10/30/12



Westcon Construction Corp.

Construction Solutions for:

- ⇒ General Engineering
- ⇒ Railroad
- ⇒ Infrastructure
- ⇒ **Bridges**
- ⇒ Structural Concrete
- ⇒ Seismic Bracing
- ⇒ Specialty Construction

References Certifications Awards

- ⇒ References
- ⇒ Certifications
- ⇒ Awards

HEADQUARTERS
275 Taylor Road
Newcastle, CA 95658-9601
CA License No. 703557
 CONTACT
Phone (916) 663-2425
Fax (916) 663-2448
www.westconconstruction.com



***“Built With
Pride
Since 1995”***

Bridges **PROJECTS REVIEW**

Johnny Cash Trail, Tunnel and Bridge, PH 2-City of Folsom

20,000 CY of mass excavation and grading; 80,000 SF of Class 1 bike trail; 7,400 LF of wood post wire ;fence Construction of a 2 phase tunnel under Prison Road to mitigate traffic impacts; On-site assembly and erection of 150’ wood pinned arch bridge utilizing a 600 Ton AT crane.



Construction Solutions for:

- ⇒ General Engineering
- ⇒ Railroad
- ⇒ Infrastructure
- ⇒ **Bridges**
- ⇒ Structural Concrete
- ⇒ Seismic Bracing
- ⇒ Specialty Construction

References Certifications Awards

- ⇒ References
- ⇒ Certifications
- ⇒ Awards

HEADQUARTERS
275 Taylor Road
Newcastle, CA 95658-9601
CA License No. 703557
 CONTACT
Phone (916) 663-2425
Fax (916) 663-2448
www.westconconstruction.com

Westcon Construction Corp.



***“Built With
Pride
Since 1995”***

Bridges **PROJECTS REVIEW**

Sump 157 Trash Rakes & Bridges - City of Sacramento

Construction of CIP concrete support structures for mechanical trash rakes within flood control channel adjacent to I-80. Scope included installation of two (2) modified railroad flatcars to create working platform for clearing channel debris.



Construction Solutions for:

- ⇒ General Engineering
- ⇒ Railroad
- ⇒ Infrastructure
- ⇒ **Bridges**
- ⇒ Structural Concrete
- ⇒ Seismic Bracing
- ⇒ Specialty Construction

References Certifications Awards

- ⇒ References
- ⇒ Certifications
- ⇒ Awards

HEADQUARTERS
275 Taylor Road
Newcastle, CA 95658-9601
CA License No. 703557
 CONTACT
Phone (916) 663-2425
Fax (916) 663-2448
www.westconconstruction.com

Westcon Construction Corp.



***“Built With
Pride
Since 1995”***

Bridges **PROJECTS REVIEW**

Anatolia Preserve Bike Trail & Bridges - City of Rancho Cordova

Temporary access bridges, rough and finish grading, 35,000/sf of pervious concrete trail paving, 6,500/lf of post & cable fencing, 2ea 30' and 1ea 121' weather steel bridges with concrete decks.



Construction Solutions for:

- ⇒ General Engineering
- ⇒ Railroad
- ⇒ Infrastructure
- ⇒ **Bridges**
- ⇒ Structural Concrete
- ⇒ Seismic Bracing
- ⇒ Specialty Construction

References Certifications Awards

- ⇒ References
- ⇒ Certifications
- ⇒ Awards

HEADQUARTERS
275 Taylor Road
Newcastle, CA 95658-9601
CA License No. 703557
 CONTACT
Phone (916) 663-2425
Fax (916) 663-2448
www.westconconstruction.com

Westcon Construction Corp.



***“Built With
Pride
Since 1995”***

Bridges **PROJECTS REVIEW**

Construction Solutions for:

- ⇒ General Engineering
- ⇒ Railroad
- ⇒ Infrastructure
- ⇒ **Bridges**
- ⇒ Structural Concrete
- ⇒ Seismic Bracing
- ⇒ Specialty Construction

References Certifications Awards

- ⇒ References
- ⇒ Certifications
- ⇒ Awards

Barton Road Bridge Replacement - County of Placer

Phased bridge demolition and replacement, temporary traffic signals, water diversion, structural excavation and backfill, CIP abutments, architectural treatments, precast bridge deck, raising of Barton Road approaches, 14-Inch water main, asphalt concrete pavement



North Forebay Bridge - Dept. of Parks & Recreation

Steel bridge on concrete abutments.



Westcon Construction Corp.

HEADQUARTERS
275 Taylor Road
Newcastle, CA 95658-9601
CA License No. 703557
 CONTACT
Phone (916) 663-2425
Fax (916) 663-2448
www.westconconstruction.com



***“Built With
Pride
Since 1995”***

Bridges **PROJECTS REVIEW**

Carson Creek Bridge off Latrobe Road-Lennar Homes

The following scope was completed in two weeks' time after contract award:
Excavation and placement of the concrete bridge footings; receiving and setting of 23ea 40,000# conspan precast bridge units; high strength grouting; waterproofing of all joints.



Construction Solutions for:

- ⇒ General Engineering
- ⇒ Railroad
- ⇒ Infrastructure
- ⇒ **Bridges**
- ⇒ Structural Concrete
- ⇒ Seismic Bracing
- ⇒ Specialty Construction

References Certifications Awards

- ⇒ References
- ⇒ Certifications
- ⇒ Awards

HEADQUARTERS
275 Taylor Road
Newcastle, CA 95658-9601
CA License No. 703557
CONTACT
Phone (916) 663-2425
Fax (916) 663-2448
www.westconconstruction.com

Westcon Construction Corp.



***"Built With
Pride
Since 1995"***

Structural Concrete PROJECTS REVIEW

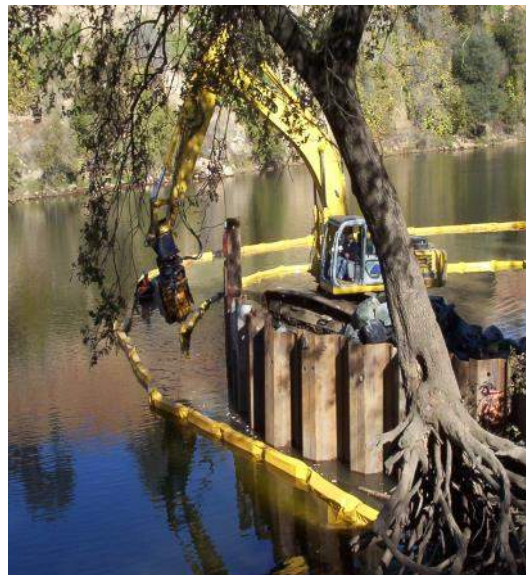
Elkhorn Boulevard Bridge-County of Sacramento

Temporary shoring of a 100-foot concrete pedestrian bridge (approx. 800 Kips),



American River Boat Launch Facility-County of Sacramento

New boat launching facility on the American River including coffer dam system, earthwork, grading paving, concrete boat ramp, restroom facilities, pathways.



Construction Solutions for:

- ⇒ General Engineering
- ⇒ Railroad
- ⇒ Infrastructure
- ⇒ Bridges
- ⇒ Structural Concrete
- ⇒ Seismic Bracing
- ⇒ Specialty Construction

References Certifications Awards

- ⇒ References
- ⇒ Certifications
- ⇒ Awards

HEADQUARTERS
275 Taylor Road
Newcastle, CA 95658-9601
CA License No. 703557
 CONTACT
Phone (916) 663-2425
Fax (916) 663-2448
www.westconconstruction.com

Westcon Construction Corp.



Structural Concrete PROJECTS REVIEW

***“Built With
Pride
Since 1995”***

Elevated Structural Slab - Private Home

Suspended structural concrete slab and driller pier foundations



Compressed Natural Gas Storage – NISCA



Construction Solutions for:

- ⇒ General Engineering
- ⇒ Railroad
- ⇒ Infrastructure
- ⇒ Bridges
- ⇒ **Structural Concrete**
- ⇒ Seismic Bracing
- ⇒ Specialty Construction

References Certifications Awards

- ⇒ References
- ⇒ Certifications
- ⇒ Awards

HEADQUARTERS
275 Taylor Road
Newcastle, CA 95658-9601
CA License No. 703557
 CONTACT
Phone (916) 663-2425
Fax (916) 663-2448
www.westconconstruction.com

Westcon Construction Corp.



Seismic Bracing PROJECTS REVIEW

***“Built With
Pride
Since 1995”***

Construction Solutions for:

- ⇒ General Engineering
- ⇒ Railroad
- ⇒ Infrastructure
- ⇒ Bridges
- ⇒ Structural Concrete
- ⇒ **Seismic Bracing**
- ⇒ Specialty Construction

References Certifications Awards

- ⇒ References
- ⇒ Certifications
- ⇒ Awards

1414 K Street –Private Party

Structural concrete/steel improvements inside an occupied 5-storey building, inclusive of seismic dampers, K-bracing, reinforced shotcrete beams.



HEADQUARTERS
275 Taylor Road
Newcastle, CA 95658-9601
CA License No. 703557
CONTACT
Phone (916) 663-2425
Fax (916) 663-2448
www.westconconstruction.com

Westcon Construction Corp.



Specialty Construction PROJECTS REVIEW

*“Built With
Pride
Since 1995”*

Construction Solutions for:

- ⇒ General Engineering
- ⇒ Railroad
- ⇒ Infrastructure
- ⇒ Bridges
- ⇒ Structural Concrete
- ⇒ Seismic Bracing
- ⇒ **Specialty Construction**

References Certifications Awards

- ⇒ References
- ⇒ Certifications
- ⇒ Awards

Supreme Court Room 500: CA D.G.S

Restoration of the State of CA Supreme Court Room 500 included removal of a drop ceiling, HVAC ducts and standard lighting installed in the 70's. Restoration included coffered plastered ceiling, oil paintings, ornate HVAC grills, original chandelier duplication, gumwood paneling and door restoration, solid brass railing, wood plank flooring & related work.



HEADQUARTERS
275 Taylor Road
Newcastle, CA 95658-9601
CA License No. 703557
CONTACT
Phone (916) 663-2425
Fax (916) 663-2448
www.westconconstruction.com

Westcon Construction Corp.



Floating Campsites, Lake Oroville

***"Built With
Pride
Since 1995"***

Specialty Construction PROJECTS REVIEW

Construction Solutions for:

- ⇒ General Engineering
- ⇒ Railroad
- ⇒ Infrastructure
- ⇒ Bridges
- ⇒ Structural Concrete
- ⇒ Seismic Bracing
- ⇒ **Specialty Construction**

References Certifications Awards

- ⇒ References
- ⇒ Certifications
- ⇒ Awards

Capitol Park Security Improvements-CA D.G.S

California State Capitol and Facility: Bullet-proof CHP kiosks, automated fail-safe anti-terrorist barrier systems, security systems, structural and architectural concrete, marble and related finishes, mechanical, electrical, high-voltage lighting.



HEADQUARTERS
275 Taylor Road
Newcastle, CA 95658-9601
CA License No. 703557
 CONTACT
Phone (916) 663-2425
Fax (916) 663-2448
www.westconconstruction.com

Westcon Construction Corp.

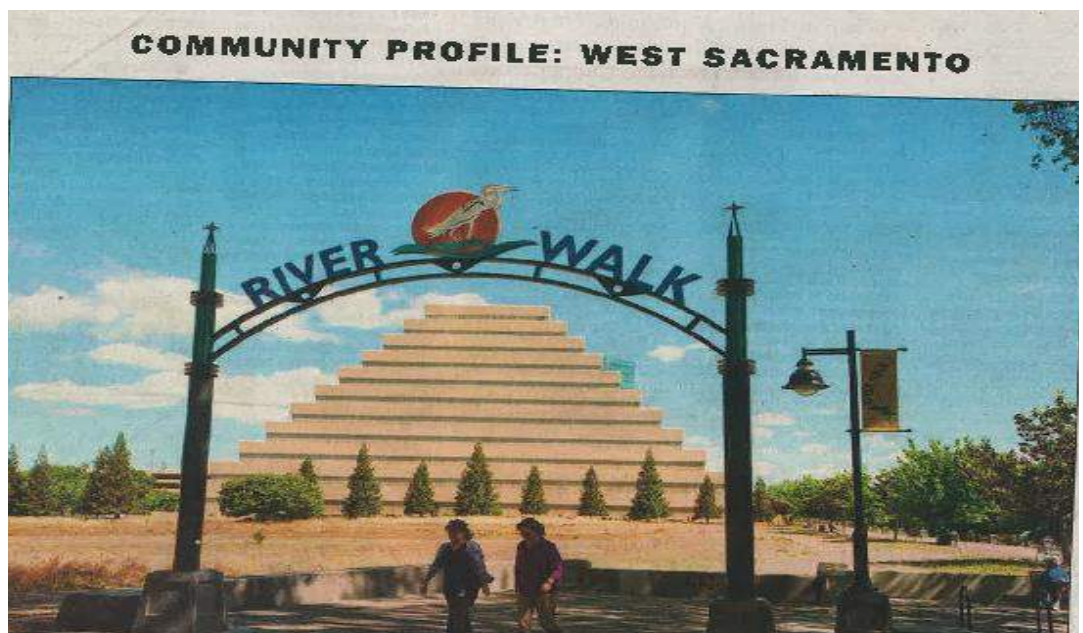
Specialty Construction PROJECTS REVIEW

*"Built With
Pride
Since 1995"*



River Walk Improvements - City of Sacramento

West Sacramento River Walk Improvements work included riverbank grading, custom concrete and brick pavers, irrigation / landscape, custom bathroom and concession building, heavy chain bollards, misc.



Westcon Construction Corp.

Construction Solutions for:

- ⇒ General Engineering
- ⇒ Railroad
- ⇒ Infrastructure
- ⇒ Bridges
- ⇒ Structural Concrete
- ⇒ Seismic Bracing
- ⇒ Specialty Construction

References Certifications Awards

- ⇒ References
- ⇒ Certifications
- ⇒ Awards

HEADQUARTERS
275 Taylor Road
Newcastle, CA 95658-9601
CA License No. 703557
CONTACT
Phone (916) 663-2425
Fax (916) 663-2448
www.westconconstruction.com



***“Built With
Pride
Since 1995”***

Specialty Construction PROJECTS REVIEW

K Street / I-5 Underpass Renovation - City of Sacramento

Demolition, structural concrete retaining walls & stairs, ornamental iron work, stone pavers, utility work.



Construction Solutions for:

- ⇒ General Engineering
- ⇒ Railroad
- ⇒ Infrastructure
- ⇒ Bridges
- ⇒ Structural Concrete
- ⇒ Seismic Bracing
- ⇒ Specialty Construction

References Certifications Awards

- ⇒ References
- ⇒ Certifications
- ⇒ Awards

HEADQUARTERS
275 Taylor Road
Newcastle, CA 95658-9601
CA License No. 703557
 CONTACT
Phone (916) 663-2425
Fax (916) 663-2448
www.westconconstruction.com

Westcon Construction Corp.



**“Built With
Pride
Since 1995”**

Specialty Construction PROJECTS REVIEW

275 Taylor Road Office Addition—Westcon Const. Corp.

Structural & crawlspace excavation, CIP walls and floors, radiant heat system, whole house vacuum system, structured low voltage systems, custom built furnishings, hand hueed beams, large & small conference rooms, break room, private offices, fire resistant & conditioned document storage facilities



Westcon Construction Corp.

Construction Solutions for:

- ⇒ General Engineering
- ⇒ Railroad
- ⇒ Infrastructure
- ⇒ Bridges
- ⇒ Structural Concrete
- ⇒ Seismic Bracing
- ⇒ Specialty Construction

References Certifications Awards

- ⇒ References
- ⇒ Certifications
- ⇒ Awards

HEADQUARTERS
275 Taylor Road
Newcastle, CA 95658-9601
CA License No. 703557
 CONTACT
Phone (916) 663-2425
Fax (916) 663-2448
www.westconconstruction.com



Westcon Main Office Conference Room

***“Built With
Pride
Since 1995”***

***Professional
References***

Construction Solutions for :

- ⇒ General Engineering
- ⇒ Railroad
- ⇒ Infrastructure
- ⇒ Bridges
- ⇒ Structural Concrete
- ⇒ Seismic Bracing
- ⇒ Specialty Construction

References Certifications Awards

- ⇒ References
- ⇒ Certifications
- ⇒ Awards

Contact	Company	Phone	Type of Work
Dennis Magures	Union Pacific Rail Road	916-390-2968	Mechanical Maintenance, Concrete, New Structures
Dan Morse	Lennar Homes	916-517-2249	Bike Trails, Bridges
Ron Duek	Kitchell, CEM	916-425-5066	Concrete
Greg Smith	County of Sacramento	916-876-6266	Infrastructure—Boat Launch Facility
Ben Crandall	Union Pacific Rail Road	801-212-5222	Industrial
Mark Reimer	City of Rocklin	916-625-5211	Infrastructure, Bridges, Parks
Steve Speights	Bennett Engineering	916-216-8923	Infrastructure—Waste Water Treatment Plant
Stu Williams	City of Sacramento	916-808-1410	Infrastructure
Michael Travers	Faithco Electric	951-273-9899	Concrete, UG Utilities
Dave Palmer	City of Rocklin	916-625-5140	Infrastructure
Jason Anderson	Marques Pipeline	916-997-4994	Structural Concrete Subcontractor
Jim Kanopka	City of Folsom Parks and Recreations “Trail Development Coordinator”	916-351-3516	Johnny Cash Bridge and Bike Trail Over Folsom Lake Crossing
Mike Barrett	Placer County	53-368-2728	Design/Build, Bridges for Hidden Valley Regional Park
Jerad Harmsen	UPRR	402-544-3238	Emergency Generator & Fueling Facilities on Donner Summit

Westcon Construction Corp.

HEADQUARTERS
275 Taylor Road
Newcastle, CA 95658-9601
CA License No. 703557

CONTACT
Phone (916) 663-2425
Fax (916) 663-2448
www.westconconstruction.com



***“Built With
Pride
Since 1995”***

Certificates

Construction Solutions for :

- ⇒ General Engineering
- ⇒ Railroad
- ⇒ Infrastructure
- ⇒ Bridges
- ⇒ Structural Concrete
- ⇒ Seismic Bracing
- ⇒ Specialty Construction

References Certifications Awards

- ⇒ References
- ⇒ Certifications
- ⇒ Awards

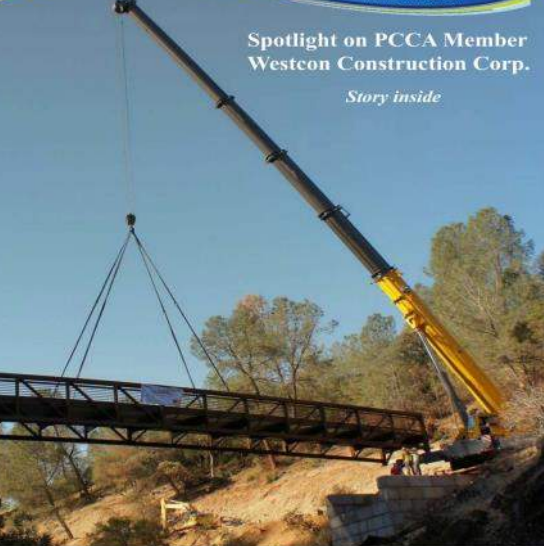
Construction Industry Certifications:

1. License #703557: Class A Engineering, Class B General Contractor, Class C-8 Concrete
2. On-staff Certified / Qualified SWPPP Inspector
3. Confined Spaces Training / Certification
4. Hazwopper / Hazardous Waste Training
5. Cal-OSHA Heavy Equipment Certifications for:
 - a. Excavators
 - b. Backhoes
 - c. Compactors
 - d. Skip Loaders
 - e. Extendable Forklifts
 - f. Bobcats
 - g. Dump Trucks
7. Excavation / Shoring Permit
8. Traffic Control and Flagging Certifications
9. CPR / First Aid
10. Comprehensive, Site-Specific Illness & Injury Programs including Weekly Jobsite Safety meetings with Site Specific Tail Gate Topics
11. Union Pacific Railroad Federally-Mandated Security Background Screening
12. Union Pacific Railroad Federally-Mandated Safety and Anti-terrorist Training
13. On staff licensed I.C.B.O. certified building inspector

HEADQUARTERS
275 Taylor Road
Newcastle, CA 95658-9601
CA License No. 703557

CONTACT
Phone (916) 663-2425
Fax (916) 663-2448
www.westconconstruction.com

Westcon Construction Corp.



**Spotlight on PCCA Member
 Westcon Construction Corp.**

Story inside

**"Built With
 Pride
 Since 1995"**

www.westconconstruction.com

2012 PCCA Public Works Project of the Year

**Westcon Construction Corp.
 Winner of the 2012 PCCA
 Public Works Project of the Year**

By Steve Berlin
 C&S Publishing

When most contractors bid a job, they expect that they will be able to easily get their supplies and materials to the work site. Usually access isn't even a consideration when bidding. But when the bid does say something like, "access is difficult, including narrow dirt roads and tight, hairpin turns," what do you do? For Westcon Construction, winner of the PCCA Public Works Project of the Year, that was just one of the many challenges they had to resolve on the Hidden Falls Coon Creek Project.

"We knew we had some access issues when the county advised all bidders that some road widening might be required to get materials to the job site," said Keith Kenworthy, Project Manager and Estimator for Westcon, with a laugh. "We did end up having to widen some of the road," he added. The massive crane needed to set the 28-ton prefabricated bridges into place could not traverse the narrow roads.

Westcon also worked with Placer County to make the project better for everyone. "We offered alternatives to the County that would give them a better project and also make it easier for us to build it."

The project Eric Campbell (company founder), Keith and support staff bid on and won was to build two bridges in the park to allow greater public access. "Part of the park was landlocked," ex-

plained Paula Vitton, a Westcon executive, "and the bridges we built connected it to the rest of Hidden Falls Park."

This park, unlike most parks with lawns and play areas, is designed for hiking, mountain bike and horse riding – it's more of a wilderness park than a conventional city park with 23 miles of multi-use trails open to hikers, bikers and equestrians.

One of the design changes suggested by Westcon and accepted by the county was to change the bridge abutment retaining walls from poured concrete to precast "Ultra Block" construction. The quarry cut appearance of these Ultra Blocks saved us time, created a safer working environment for personnel, and significantly improved the rustic appearance of these bridges.



"We would have had a very difficult time getting the concrete to the pour site," he added. "So we suggested to the county, and they agreed, to let us use Ultrablocks. And, as a bonus, we gave them a finished surface over the blocks instead of the rough concrete surface they had initially placed into the specifications."

Another major issue was that the prefabricated bridges they installed were made by Excel Bridge Manufacturing Company and shipped up to the job site. The foundations Westcon created for the bridges had to be perfect so the bridges would sit correctly. "I don't know how many times our guys measured for that, but it was more than twice," said Keith, alluding to the old adage: measure twice and cut once.

"Our subcontractors and vendors were great," Paula added. "They really went out of their way to work with us to get this job done correctly and on time." One example she gave was the concrete supplier who had to change the mixture



to ensure that it set at the correct time, allowing for considerably more travel time than on most conventional jobs.

Westcon Construction was founded in 1995. "Founded on Valentine's Day," Paula noted with a grin. "I was there," she said. Eric Campbell who founded the company started in Sacramento then

moved his firm up the hill to Newcastle 12 years ago.

"We used to be members of both the Placer Exchange and the Sacramento Exchange, but PCCA has everything the Sacramento Exchange has, so we dropped that membership years ago," Keith said. "It's great that we can go

onto the PCCA site and see plans and jobs for Sacramento as well as Placer." Keith and Paula agree that PCCA is a vital component of their success. "Finding out about all the jobs that are available and then being able to drill down and see all the project details including plans and specifications is terrific," Keith said.

Both agree that PCCA membership has helped Westcon, and they encourage smaller and younger contractors to join. "It's like you are joining with a larger, more experienced company when you join," Keith explained. "They help you find jobs and train you on computer software to make bidding easier and more accurate."

Westcon Construction Corporation is located at 275 Taylor Road in Newcastle and they can be reached at 916-663-2425.

**About Hidden Falls
 Regional Park:**

The 221-acre open space park is located at 7587 Mears Place, north of Mt. Vernon Road between Auburn and Lincoln ([Click for location map](#)).

Features of the expanded park include

seven miles of natural surface trails suitable for hiking, running, biking and horseback riding ([Click for a map of the Trails System](#)). Park amenities include a paved access road, 50-space paved parking lot, equestrian staging area, utilities, restrooms and a 60-foot emergency-access bridge over Deadman Creek.

In addition to the more vigorous activities on the natural surface trails, park visitors are able to enjoy fishing, picnicking, wildlife viewing, photography and other passive recreational pursuits. A paved, accessible trail is also available, which begins near the parking lot and winds through a live oak grove and picnic areas.

Outstanding natural features at Hidden Falls include Coon Creek and Deadman Creek, groves of blue oak woodlands and a year-round waterfall, 20-30 foot high.

Adjacent to this section of Hidden Falls is a 961-acre property that the county also acquired through Placer Legacy, previously called "Spears Ranch." The county has begun an environmental-review process which must be completed before making improvements to the second site. Together, the two parcels comprise almost 1,200 acres of open space.



If you visit Hidden Falls in a week from now, just north of the new waterfalls are ready for you in 2015:
 • 1960 additional acres (220 acres open today)
 • 25 miles of additional trails and picnic areas (17 miles today)
 • New waterfalls to enjoy with a new creek
 • Interpretive panels - "Discover what you discovered!"
 • New live oak woodlands - near 1000 foot high - to add to the north side of Coon Creek and back

Information and map from <http://www.placer.ca.gov/departments/facility/parks/hiddenfalls>

RECITALS

WHEREAS, the Board of Directors of the Placer County Contractors Association is a Non Profit Corporation founded on the goals of improving the quality of construction projects throughout the region;

WHEREAS, the Board of Directors has determined that promoting and supporting projects that stand out in the region for improving working and living conditions is a vital part of our charter;

WHEREAS, the Board of Directors has met and determined that the project awarded this night, January 9th 2015 has improved a neighborhood, enriched the community and benefitted not only the property owner but the contractors who participated in the improvement, and the general public;

NOW THEREFORE THE PCCA BOARD OF DIRECTORS HEREBY UNANIMOUSLY ADOPT, APPROVE AND RATIFY THE FOLLOWING:

1. Westcon Construction Corp has consistently been a strong advocate for quality construction projects, and has consistently been part of some of the regions most notable efforts;

2. The public works project, The Johnny Cash Bridge, a walking bridge located in Folsom CA has improved access to a major recreation center and has become an instant landmark;

3. PCCA Board of Directors hereby awards Westcon Construction Corp. The PCCA Annual Public Works Project Of The Year.

THE UNDERSIGNED, ON BEHALF OF THE PRESENT DIRECTORS OF THE PCCA BOARD OF DIRECTORS, HEREBY ADOPT, APPROVE AND RATIFY THIS RESOLUTION
January 9th 2015

Patrik Remington
President

**"Built With
Pride
Since 1995"**

Awards

www.westconconstruction.com

PCCA Member Westcon Honored

**By Steve Berlin
C&S Publishing**

As was reported in the January 12th edition of the *PCCA Construction News*, Westcon Construction was honored at the Annual Dinner for completing the PCCA Public Works Project of the Year: the Johnny Cash Bridge and Pedestrian Walkway in the City of Folsom. 2014 was the second year in a row that Westcon won this honor.

"It was a fun, challenging project," noted Eric Campbell, President and founder of Westcon Construction Corporation. "But then, we specialize in unique and challenging projects."

Some of the components that made this project a challenge included 45-foot, single-lift height concrete tower columns, which eliminated any visible cold joints. The cast-in-place tower design replicates the Folsom Prison east guard tower entrance. Each of the two towers required five pours to complete. Each of those pours began at 4:30

am, and continued without any interruption until 7:00 pm.

The tower roof structures were also challenging to frame, because they each had six different compound angles that had to come together into a single point. The weathered steel roof also had to accommodate the compound angles.

All of the steel used in the project is what is known as "weathered steel." Commonly known under the trade name COR-TEN steel – sometimes written as "corten steel" – this is a group of steel alloys developed to eliminate the need for painting. The steel very quickly forms a stable, rust-like outer coating that gives the appearance it has been exposed to the elements for years. But, the steel remains strong and viable, and never needs to be painted or treated, which is a real money-saver.

"Perhaps our biggest challenge," Campbell said, "was when, part-way through, the City asked if the work could be completed three



From left: Mike Latham, Concrete & Bridge Foreman; Gordon Jones, General Superintendent; Eric Campbell, President; Rob Garner, Site Foreman

weeks early. Turns out they wanted the grand opening to coincide with a previously-scheduled concert by Johnny Cash's daughter, Rosanne Cash, who could then be at the ceremony for the bridge." Campbell and his crew worked harder, and met the new deadline, but it was touch-and-go, particularly when



45' single-lift concrete formwork and bracing



ActionCamAerial

Awards

**"Built With
Pride
Since 1995"**

www.westconconstruction.com

PCCA Member Westcon Honored

the 80,000-pound bridge, which was manufactured and shipped from Minnesota in two sections, each 14-feet wide by 75-feet long, was not allowed to travel across Nevada over the weekend.

"We knew we'd have to get special permits for the entire route from Minnesota to California, but we had no idea the truck could not cross Nevada on a weekend," said Campbell. While the truck sat at the Nevada border from Friday afternoon to Monday morning, Campbell looked up other "odd" Nevada laws.

"Did you know," he asked, "that in Elko, Nevada, everyone walking the streets is required to wear a mask? Or that Reno prohibits sitting or lying down on public sidewalks? And, camels and dromedaries are barred from running at large on or about the public highways of the State of Nevada."

Shaking his head, Campbell added, "that's the first time we've ever run across a Nevada law that was more stringent than a California law."



UltraBlock abutment and approach walls under construction

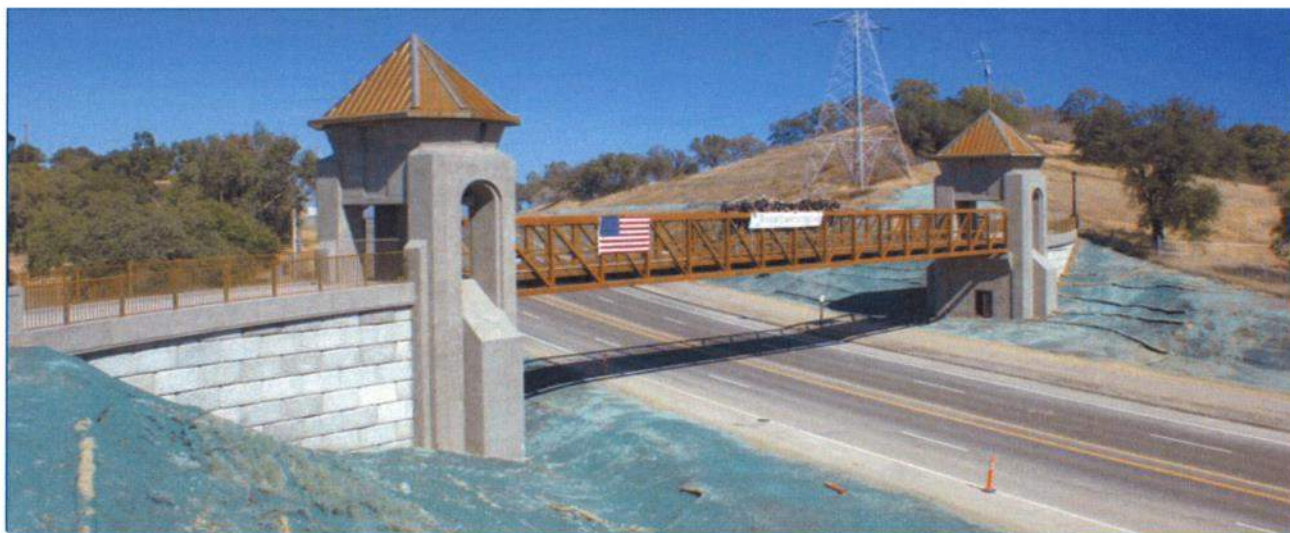
It is also a credit to Westcon Construction that by the end of the six-month long project, they had paid over 16,000 man-hours of payroll and not lost a single day to injury. "We take jobsite safety and taking care of our workers very seriously," Campbell said.

Westcon Construction is located at

275 Taylor Road in Newcastle, and can be reached at 916-663-2425.

For more information about this project, or Westcon Construction, visit www.westconconstruction.com

[Click here](#) to view a short video of the project, produced and edited by Brian Joder of BicyclingEvents.com



The WCC crew one day prior to grand opening

Action Cam Aerial

Awards

www.westconconstruction.com



FRIDAY AND SATURDAY, OCTOBER 3 & 4, 2014 | YOUR NEIGHBOR SINCE 1872 | ONE DOLLAR

Auburn Journal



Newcastle contractor builds Johnny Cash Trail span

Folsom's new \$3.8 million overcrossing on the Johnny Cash Trail gets the ribbon-cutting treatment on Saturday with the Matt in Black's daughter Suzanne Cash helping out.

Folsom, Calif. and Co. have a Newcastle contractor, Westcon Construction Corp., to thank for the work that took place to reach the opening stage on what is certain to be a regional landmark.

Westcon was working under a tight deadline, with the 60,000-pound, pre-fabricated bridge arriving from Minnesota less than two weeks ago. The span was shipped onto bearings by crane and Westcon was able to have all the pieces—including 40-kilo-high covers replicating the prison's penitentiary architecture—in place for the weekend ceremony.

The timeline was tight because the ribbon-cutting was set to coincide with an appearance in Folsom by Prisoner Cash for a concert, tonight at the city's Music Center.

Eric Campbell, Westcon president and founder, said that one of the reasons that Westcon was pleased to help provide was a flash on what would have been a plain concrete structure, but that reflects the granite of the river bridge piers.

With Cash's "Folsom Prison Blues" known around the world and bringing Folsom a fortune then to fame as a result, the city is honoring Cash with a distinctive overcrossing as part of the Johnny Cash Trail. The trail is planned to eventually extend over the city's historic river bridge, the Green Valley Road, into



Westcon
LIFE
Eric Campbell

visiting prison property and looking at the old and new prison in Folsom's historic district and the American River Parkway.

The public is being invited to start walking from 9 a.m. to 11 a.m. Saturday. The ribbon-cutting ceremony starts at 10 a.m.

And, Mr. Cash never served a real prison term in Folsom Prison. A passionate advocate for prisoners' rights, he entertained in shorts of similar fashion. It was his reputation that his recording company gave him the green light to film at Folsom and the performance became one for the ages.

It's not that Folsom Prison didn't handle its share of parolee releases over the years. Singer Rick James, 36, of funk-pop "Super Freak" fame, spent five years behind bars there in the 1980s. He left in 1986.

Other alumni include Charles Manson, leader of a murderous cult in 1969; Los Angeles, 1940s "Bad Light Band"; Gary Coleman, LEO advocate Timothy Leary and tough-guy actor Danny Trejo. Among the executions there was one in 1906 that ended the life of Auburn quadruple killer Adolph Weber.

Game on for Auburn's Erwin

According to Paraphrase this year has been a big jump in international



An architect's rendering shows the new bridge spanning Folsom Lake Crossing Road, designed to visually mimic Folsom Prison's East Gate guard towers.



Johnny Cash strikes a pensive pose outside Folsom State Prison during his legendary visit there on Jan. 13, 1968, for two Sunday afternoon performances in the cafeteria. The subsequent live LP made musical history and the city of Folsom is marking his visit with the dedication of the Johnny-Cash trail on Saturday.

History for Los Angeles includes expertise based Saint Motel, which Auburn and Place

Fall color time

Fall is in the air and the leaves are starting to turn. This year, the U.S. Forest Service is kicking Blaine County visitors and those visiting farther afield to see the colors of the season at their peak. The agency has established a Fall Colors 2014 website that features social-media tips to help visitors stay tipsy to witness the fiery reds and yellows of fall.

The Fall Colors 2014 website offers a map that shows which areas are opening in California and around the nation. The map is shaded in green, where areas have yet to peak, bright red, where they are at their peak, and yellow, where they are in the waning. Another map helps visitors find the national forest near them. In Auburn, Calif., it's the Tahoe National Forest, and the website is already showing a dusting of some-tippier elevations.

The colors have yet to break out in Auburn but if the rains stay away, fall foliage should again be spectacular.

Some favorite spots include the area around the Maple Street Victorian in Old Town and the view from Highway 49 over the American River into the El Dorado County valley. The canyon dotted with bursts of autumn color. Media will continue to keep readers updated on some of the best views this year—in a county rich in history of locating great Christmas or Halloween food displays.

Media Life's Eric Thompson can be reached at jthompson@westconmedia.com or (530) 252-2122. Also reach Thompson on Twitter at @EricThompson.

Westcon Construction Corp.
Bike Path & Overcrossing
Folsom Lake Crossing Road
2014

